

T-Lock Wrap Around Insert Instructions

Items Needed for Installing T-Lock Wrap Around Insert:

T-LOCK Wrap Around Insert - #TLOCKWRAP1

T-Lock Wrap Around Platen Insert

T-Lock Base - #TLOCKBASE

T-Lock Base needed for using Inserts

Instructions for Installing the T-Lock Wrap Around Insert:

Below are instructions for installing the T-Lock Wrap Around Insert on your T-Lock Platen Base.



Step 1:

Insert the T-Lock Base into the platen stem of the Brother DTG printer.



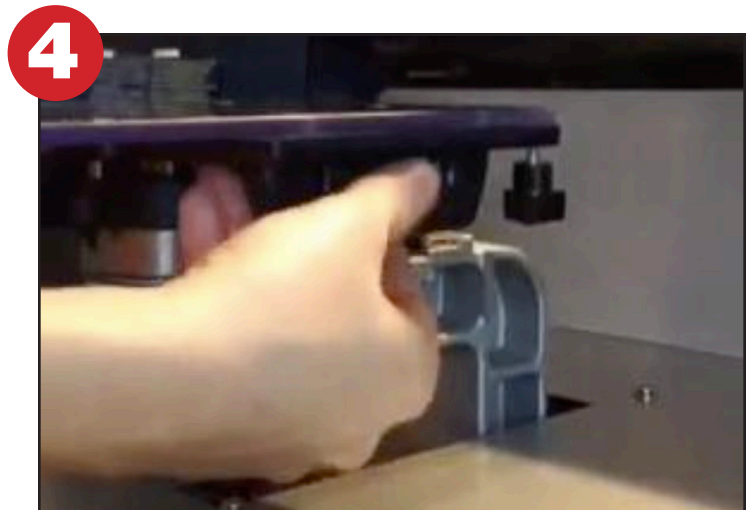
Step 2:

Adjust the height of the platen and tighten the locking lever.



Step 3:

Insert the T-Lock Wrap Around Insert into the T-Lock Base.

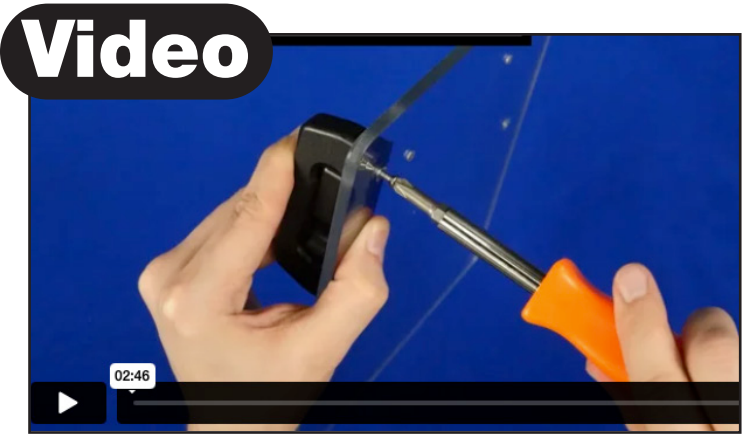


Step 4:

Secure the T-Lock Wrap Around Insert by rotating the center piece in the T-Lock brackets.

Click or Scan Below to View the T-Lock Wrap Around Print Video

Click or Scan Below to View the GTX T-Lock Assembly Video



Wrap Around Print Video

This video shows the T-Lock Wrap Around Insert in action.



GTX T-Lock Assembly Video

Learn how to assemble the T-Lock base.