

T-LOCK SHOE INSERT INSTRUCTIONS

Items Needed for Installing T-Lock Shoe Inserts:

T-LOCK SHOE INSERTS - #TLOCKSPIDIST

T-Lock Shoe Inserts in 3 sizes

T-Lock Base - #TLOCKBASE

T-Lock Base needed for using Shoe Inserts.
T-Lock Base is NOT included with Inserts.

Double-sided Tape

Double sided tape needed for securing shoes to the platen.

Instructions for installing T-Lock Shoe Inserts:

Below are instructions for installing the T-Lock Shoe Inserts on your T-Lock Platen Base.



Step 1:

Insert the T-Lock Base into the platen stem of the Brother DTG printer.



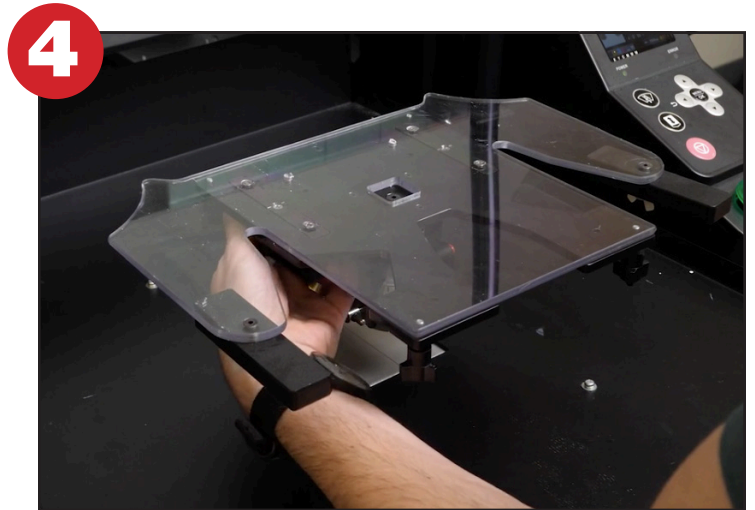
Step 2:

Adjust the height of the platen and tighten the locking lever.



Step 3:

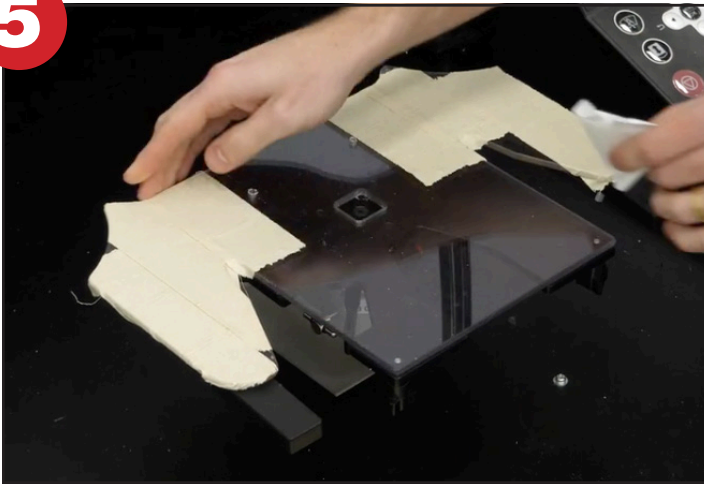
Insert the T-Lock Shoe Insert into the T-Lock Base.



Step 4:

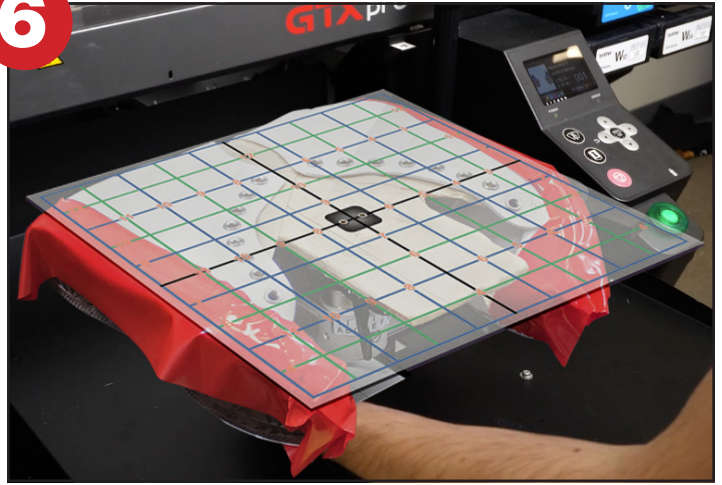
Secure the T-Lock Shoe Insert by rotating the center piece in the T-Lock brackets.

5



Step 5:
Apply double sided tape needed for securing shoes.

6



Step 6:
After loading shoes on the platen, insert the Alignment Jig in the square cut-out on the Shoe Platen insert to be able to align the artwork in your graphic software program to match up with the Alignment Jig. Remove the Alignment Jig before printing.

Click or Scan Below to View the T-Lock Shoe Insert Video

Click or Scan Below to View the GTX T-Lock Assembly Video

Video



T-Lock Shoe Insert Video

This video shows how to install and print on shoes with a T-Lock Shoe Insert.

Video



GTX T-Lock Assembly Video

Learn how to assemble the T-Lock base.