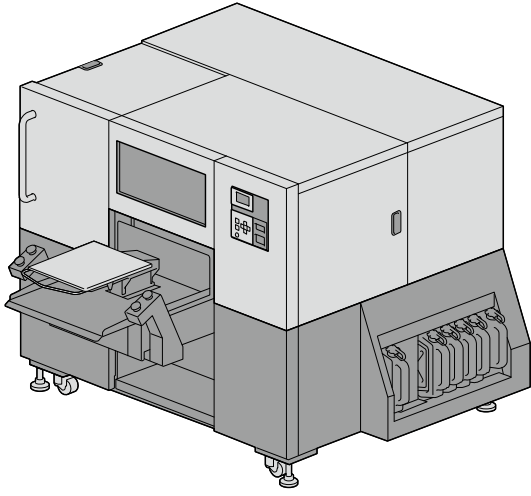


GTX600NB Professional Use GARMENT PRINTER Safety Manual



Please be sure to read this manual before using this product.
Keep this manual in a safe place for future use.
This printer should only be used by operators who are appropriately trained in its safe operation.

Thank you very much for buying a BROTHER printer. Before using your new printer, please read the "SAFETY INSTRUCTIONS" and handling instructions carefully. Please keep this manual within easy reach for quick reference. Refer to the attached CD for the contents of the Setup Manual.

- Brother GT/ISM Support App will provide you the latest support information for Brother Direct to Garment Printers and Industrial Sewing Machines.
 - Set up guide, user's manual, regularly maintenance movies, and parts list (Parts book) for regular maintenance/repair available for download/view.
 - Search by Error code.
 - Downloaded contents can be seen offline.



SAFETY INSTRUCTIONS

1. Safety indications and their meanings

This instruction manual and the indications and symbols that are used on the printer itself are provided in order to ensure safe operation of this printer and to prevent accidents and injury to yourself or other people. The meanings of these indications and symbols are given below.

Indications

	DANGER	The instructions which follow this term indicate situations where failure to follow the instructions will result in death or serious injury.
	WARNING	The instructions which follow this term indicate situations where failure to follow the instructions could result in death or serious injury.
	CAUTION	The instructions which follow this term indicate situations where failure to follow the instructions may result in minor or moderate injury.
	IMPORTANT	The instructions which follow this term indicate situations where failure to follow the instructions may result in damage to property.
	NOTE	The instructions which follow this term indicate precautions and restrictions for use.

Symbols

	This symbol () indicates something that you should be careful of. The picture inside the triangle indicates the nature of the caution that must be taken. (For example, the symbol at left means "beware of injury".)
	This symbol () indicates something that you must not do.
	This symbol () indicates something that you must do. The picture inside the circle indicates the nature of the thing that must be done. (For example, the symbol at left means "you must make a ground connection".)

2. Notes on safety

DANGER	
	Contact with high voltage sections may lead to a serious injury. Turn off the power, and remove the cover 5 minutes later.

WARNING	
----------------	--

Basic precautions	
	This printer should only be used by operators who are appropriately trained in its safe operation.
	The printer is not suitable for use in places where children are present.
	To prevent accidents and problems, do not modify the machine yourself. Brother will not be held responsible for any accidents or problems resulting from modifications made to the machine.
	Do not handle the power cord with wet hands. Otherwise, it may cause electric shocks.
Installation	
	Do not set up the printer in a dusty environment. If dust collects inside the printer, it may cause fire or electric shocks or problems with correct operation.
	Be sure to connect the ground. If the ground connection is not secure, you run a high risk of receiving a serious electric shock, and problems with correct operation may also occur.
	Do not bend the cords excessively or fasten them too hard with staples or anything similar to secure cords. Otherwise it may cause fire or electric shocks.
	Do not connect power to the printer on the floor near the printer. Otherwise, it may cause a fire, electric shock, or malfunction if water drips from the printer.
Printing	
	If a foreign object gets inside the printer, immediately turn off the power, disconnect the power cord, and contact the place of purchase or a qualified technician. If you continue to use the printer while there is a foreign object inside, it may result in fire or electric shocks or problems with correct operation.
	Do not allow the printer to come into contact with liquids. Otherwise it may cause fire or electric shocks or problems with correct operation. If any liquid gets inside the printer, immediately turn off the power, disconnect the power cord, and contact the place of purchase or a qualified technician.
	Do not use the printer when smoke or a bad odor is coming from the printer. Otherwise it may cause fire or electric shocks or problems with correct operation. Immediately turn off the power, disconnect the power cord, and contact the place of purchase or a qualified technician.
	Keep your finger or any body part away from the rotating fan. Otherwise it will be caught up, which results in injuries. Turn off the power when you approach the fan.

CAUTION	
Environmental requirements	
	Use the printer in a place which is adequately ventilated. A slight odor is generated when the printed articles are being fixed by heat.
Installation	
	The printer machine weighs 680 kg (1499 lb). Transporting and setting up of the printer should be held in the proper way. Otherwise, the printer may topple over and cause injury.
	Unplug the printer and contact the dealer where you purchased the printer or a trained technician if the printer topples over. If you continue to use it, it may result in fire or electric shocks or poor printing quality.
	Do not set up the printer in a place where it will be affected by vibration. Otherwise the printing quality may be degraded or the printer may topple over, which causes injury or results in failure of the printer.
	Do not connect the power cord until installation is complete. The printer may operate if the power is turned on by mistake, which could result in injury.
	Do not climb onto the printer or place heavy objects on top of it. You may get injured if it becomes unbalanced and tips over.
Printing	
	This printer should only be used by operators who are appropriately trained in its safe operation.
	Ensure there is adequate space left in front of the printer and avoid placing any objects. Otherwise your hand may get caught between the platen and an object, which may result in injury.
	Do not handle the platen while printing. If your hand gets caught between the platen or the T-shirt tray and the covers, it may be injured.
	Do not put your hands inside the covers while the printer's power is turned on. Otherwise your hands may touch against moving parts and this may result in injury.
	When the pretreatment is applied to printed objects (like a T-shirt) with a spray or pretreatment applicator, sprayed mist is generated. So wear a pair of plastic gloves, a mask and protective glasses (or goggles) designed to shield against liquid splash, and fully take care of the air ventilation when you are working with it.
	When a problem occurs with the operation of the printer, contact the place of purchase or a qualified technician.
	Be careful not to put your hands in the clearance of the cover of the lifting up/down mechanism. Doing so may cause injury.
Maintenance	
	Be careful not to pinch your fingers when closing each cover. You may get injured if you pinch your fingers.
	When you mount or replace the head, be careful not to get your hands or fingers caught. Otherwise you may be injured.
	Do not drink liquids such as the ink, cleaning solution, pretreatment, or waste. They may cause diarrhea or vomiting. When handling liquids, such as the ink, cleaning solution, pretreatment, and waste, use protective glasses and gloves to avoid causing your eyes and skin to contact the liquids. It may cause inflammation. In case of contact with eyes, do not rub but immediately rinse the eyes with water. Keep the liquids out of the reach of children.
	Be sure to wear protective goggles and gloves when handling the grease, so that it does not get into your eyes or onto your skin. It can cause inflammation. Do not drink or eat the grease. It may cause diarrhea or vomiting. Keep the liquids out of the reach of children.
	When replacing parts and installing optional accessories, be sure to use only genuine Brother parts. Brother will not be held responsible for any accidents or problems resulting from the use of non-genuine parts.
	When replacing parts or installing optional accessories, be sure to follow the procedures described in the Instruction Manual. Incorrect procedures could cause injuries or problems.
	Follow the corresponding instructions in the manual when you put your hands inside the cover during regular maintenance while the power is turned on.

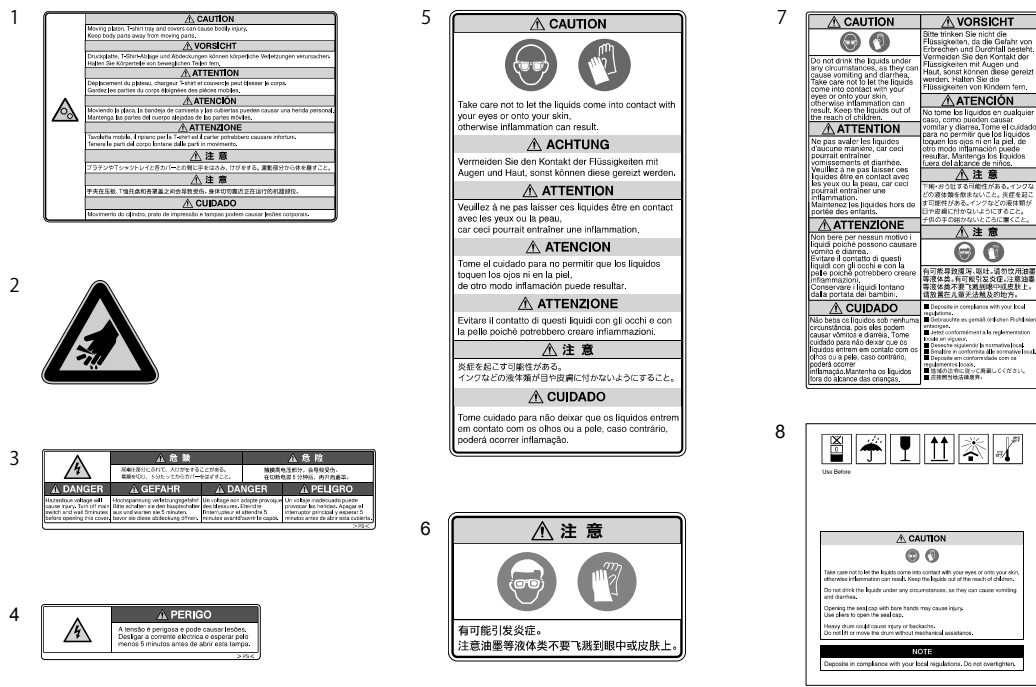
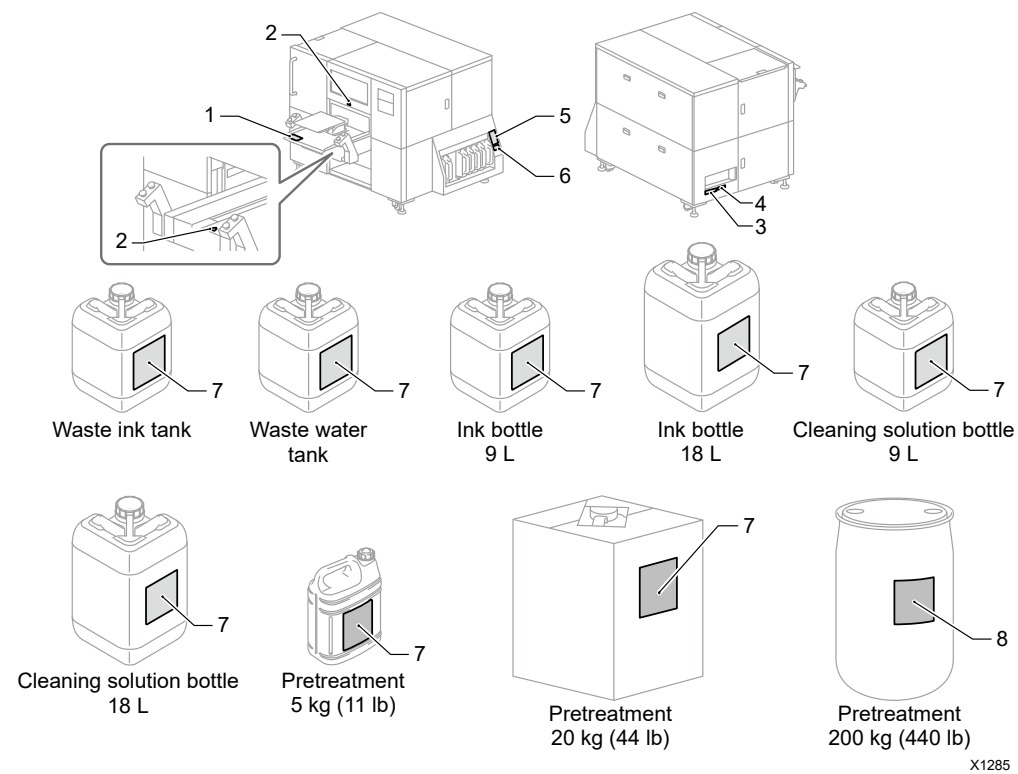
IMPORTANT	
------------------	--

Printing	
	Do not move the platen by hand. Otherwise the printer may be mechanically and electrically damaged.
	Ensure there is adequate space left in front of the printer and avoid placing any objects. The platen may be hit and damaged.

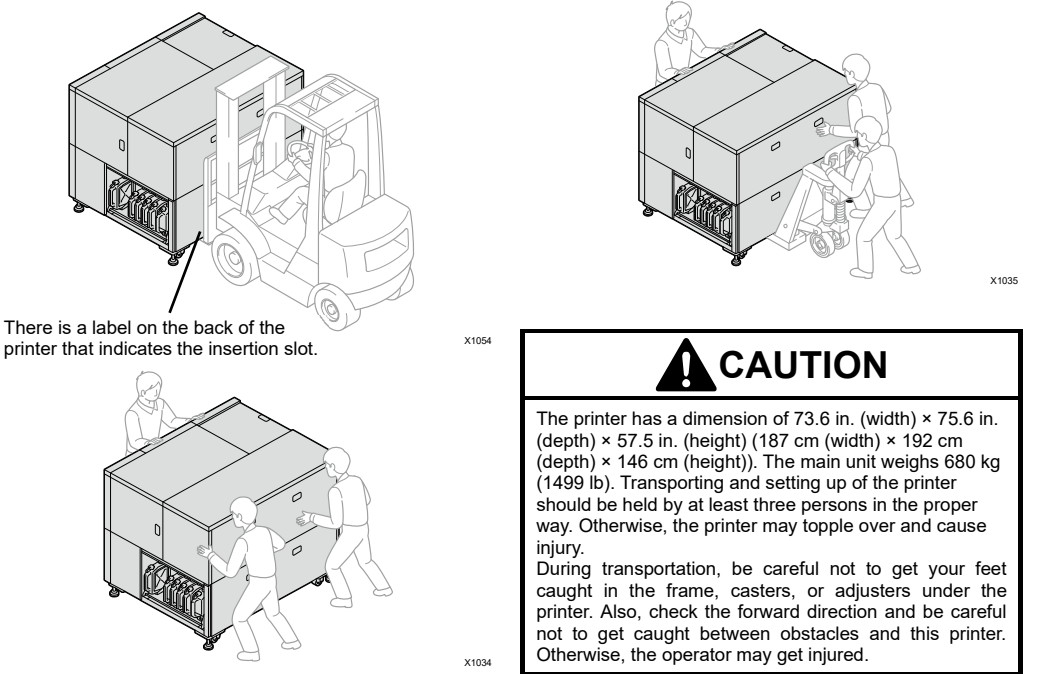
NOTE	
-------------	--

	Use the printer in an area which is free from sources of strong electrical noise such as electrical line noise or static electric noise. Sources of strong electrical noise may cause problems with correct operation.
	Any fluctuations in the power supply voltage should be within $\pm 10\%$ of the rated voltage for the printer. Voltage fluctuations which are greater than this may cause problems with correct operation.
	The power supply capacity should be greater than the requirements for the printer's power consumption. Insufficient power supply capacity may cause problems with correct operation.
	In the event of an electrical storm, turn off the power and disconnect the power cord from the wall outlet. Lightning may cause problems with correct operation.

3. Warning labels



2 Transporting the printer



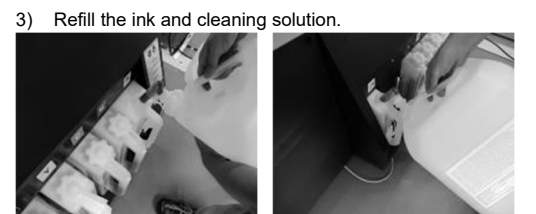
3 Refilling the ink and cleaning solution

Turn ON the power of the printer and perform the operation while the printer is in Standby mode.



IMPORTANT Agitate the white ink before refilling. For details, refer to the Instruction Manual.

- 1) **MENU OK** -> [Ink refill] -> Select the ink color and cleaning solution you want to refill -> **MENU OK**
- 2) Insert the IC stick of the same color as the ink to refill -> **MENU OK**

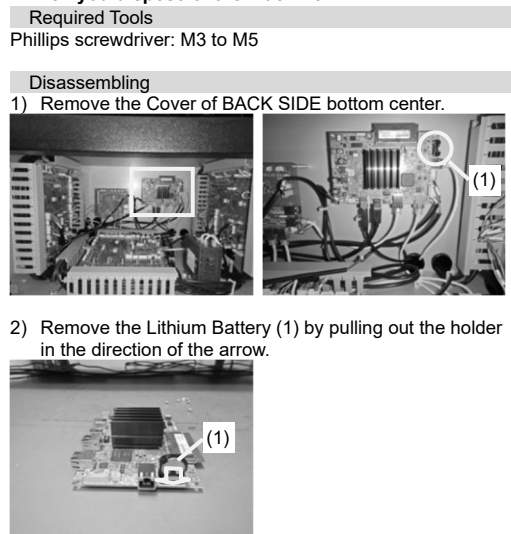


IMPORTANT When refilling ink or cleaning solution, make sure the surface of the ink or cleaning solution does not exceed the scale line above 6. For white ink or cleaning solution, refill it until the surface exceeds the scale line below 6. For color ink, refill it until the surface exceeds the scale line below 4.

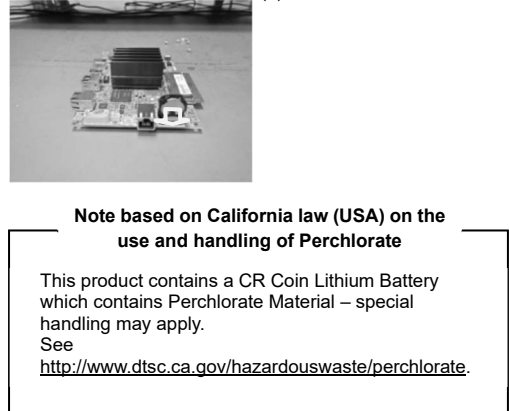
4) Follow the instructions on the screen.

IMPORTANT Be sure to close the tank lids once you have refilled the ink and cleaning solution. To store a cock after use, wipe off ink with a waste cloth and seal it in a plastic bag. Do not use a non-standard funnel. Use the provided cock. Otherwise, ink may be contaminated or deteriorated, possibly damaging the printer.

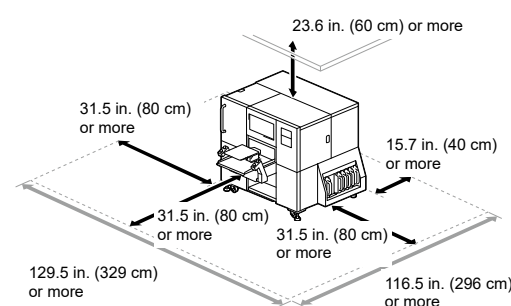
<When you dispose of the machine>



3) Pickup the Lithium Battery (1) to the direction of the arrow.



1 Checking the installation site

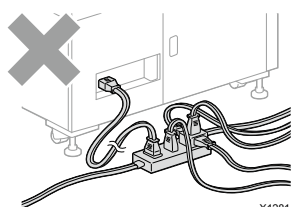


The following environmental requirements should be met:

Environment	Temperature	Humidity
Humidity (%)	0°C (32°F) to 40°C (104°F)	20 % to 85 % (no condensation)
Working Environment ¹	10°C (50°F) to 35°C (95°F)	
Recommended Print Environment ²	18°C (64.4°F) to 30°C (86°F)	35% to 85 % (no condensation)
Electrical Requirements	Power	Power Consumptions
—	Single-phase 200-240 V, 50/60 Hz	5 A max.

¹: Environmental range where the printer can be operated.
²: Environmental range where sufficient printing quality can be secured.

- When installing the printer, avoid any place that presents direct sunlight or a large amount of dust.
- The size is 73.6 in. (width) × 75.6 in. (depth) × 57.5 in. (height) (187 cm (width) × 192 cm (depth) × 146 cm (height)). The main unit weighs 680 kg (1499 lb).
- Do not use an extension cable.
- Keep a minimum workspace of 31.5 in. (80 cm) in front and on the left and right sides of the printer. Also, keep 15.7 in. (40 cm) or wider clearance at the back of the printer. Keep 23.6 in. (60 cm) or wider space free above the unit as well. If this space is not secured, you will have to move peripherals or the printer when making a repair.
- When installing the printer, place a level gage on the top surface of the platen to make adjustments so that the main unit is set horizontally.
- When connecting the power cord to the printer, do not use overloaded sockets.



*Please note that the contents of this manual may differ slightly from the actual product purchased as a result of product improvements.

BROTHER INDUSTRIES, LTD. <https://www.brother.com/>
1-5, Kitajizoyama, Noda-cho, Kariya 448-0803, Japan.